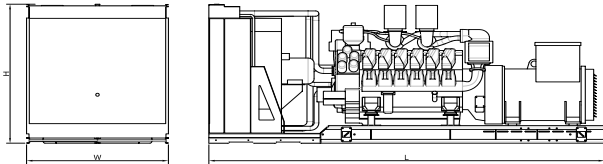
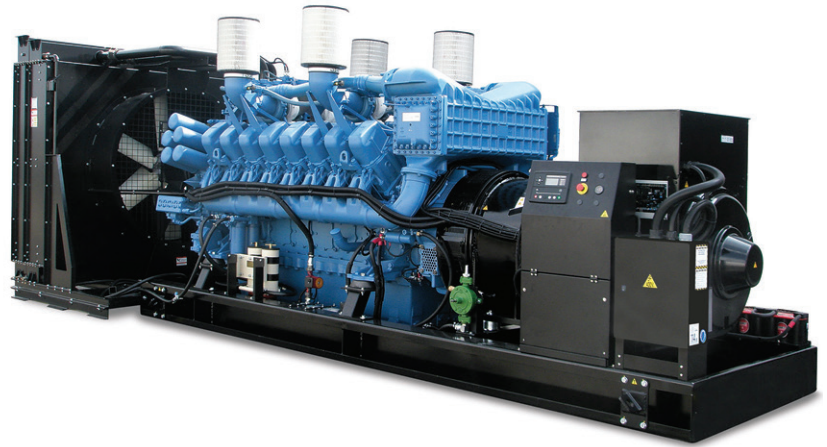


3100 KVA STANDBY OPEN SET MTU



TECHNICAL INFORMATION

Voltage (V):	400/230
Frequency (Hz):	50
PRP Power (kVA)	2815
Standby Power (kVA)	3115.2
PRP Power (kW)	2252
Standby Power (kW)	2492.2

Weight and Dimensions (mm)

Length (L)	8000
Width (W)	2280
Height (H)	2765
Weight (kg)	20000

Consumption

	PRP Power	
	L/h	Range (hours)
25%	170.8	0
50%	300.4	0
75%	416.4	0
100%	546.6	0

	Standby Power	
	L/h	Range (hours)
25%	176.7	0
50%	314.1	0
75%	452.3	0
100%	603.1	0

ENGINE

Brand	MTU
Model	20V 4000 G63
Electronic Management	YES
No. of cylinders	20
Engine Capacity (c.c)	95400
Bore (mm)	170
Stroke (mm)	210
Compression ratio	16.4:1
Water cooled	YES
Speed (R.P.M)	1500
Mechanical Net Power (kWm)	2596

Cooling System

Flow of air from fan (m3/min)	2556
-------------------------------	------

Lubrication System

Oil sump capacity (l)	340
Maximum oil consumption (% fuel consumption)	1

Air intake system

Aspirated air flow (m3/min)	180
-----------------------------	-----

Electrical System

Number of batteries	4
Battery	12V 44Ah-730A

Exhaust System

T ^a gas emission (°C)	540
Gas flow (m3/min)	480

ALTERNATOR

Model	LSA 53.1 M80
Electronic Regulation	YES
AVR	AREP+R499
Power (kVA)	3300

ELECTRIC PANEL

Protection Devices	YES
Control Card	DEEP SEA 7320