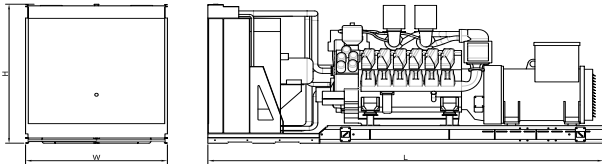
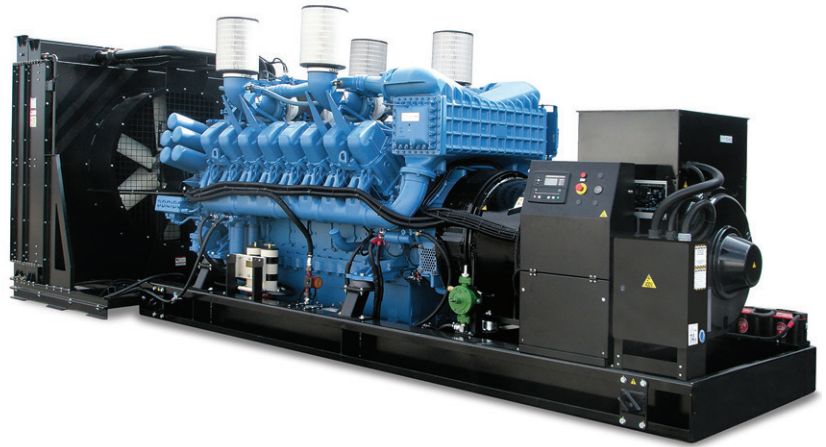


2750 KVA STANDBY OPEN SET MTU



TECHNICAL INFORMATION

Voltage (V):	400/230
Frequency (Hz):	50
PRP Power (kVA)	2500
Standby Power (kVA)	2750
PRP Power (kW)	2000
Standby Power (kW)	2200

Weight and Dimensions (mm)

Length (L)	8000
Width (W)	2280
Height (H)	2765
Weight (kg)	20000

Consumption

	PRP Power	
	L/h	Range (hours)
25%	155.3	0
50%	273.1	0
75%	378.5	0
100%	496.9	0

	Standby Power	
	L/h	Range (hours)
25%	160.9	0
50%	286.1	0
75%	410	0
100%	540.9	0

ENGINE

Brand	MTU
Model	20V 4000 G23
Electronic Management	YES
No. of cylinders	20
Engine Capacity (c.c)	95400
Bore (mm)	170
Stroke (mm)	210
Compression ratio	16.4:1
Water cooled	YES
Speed (R.P.M)	1500
Mechanical Net Power (kWm)	2346

Cooling System

Flow of air from fan (m3/min)	2208
-------------------------------	------

Lubrication System

Oil sump capacity (l)	340
Maximum oil consumption (% fuel consumption)	1

Air intake system

Aspirated air flow (m3/min)	162
-----------------------------	-----

Electrical System

Number of batteries	4
Battery	12V 44Ah-730A

Exhaust System

T ^a gas emission (°C)	530
Gas flow (m3/min)	438

ALTERNATOR

Model	LSA 57.2 VL95
Electronic Regulation	YES
AVR	R 499
Power (kVA)	2750

ELECTRIC PANEL

Protection Devices	YES
Control Card	DEEP SEA 7320