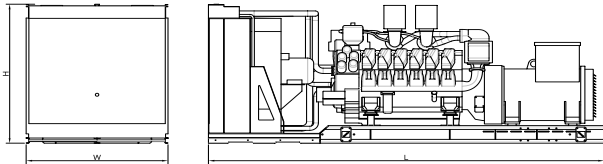
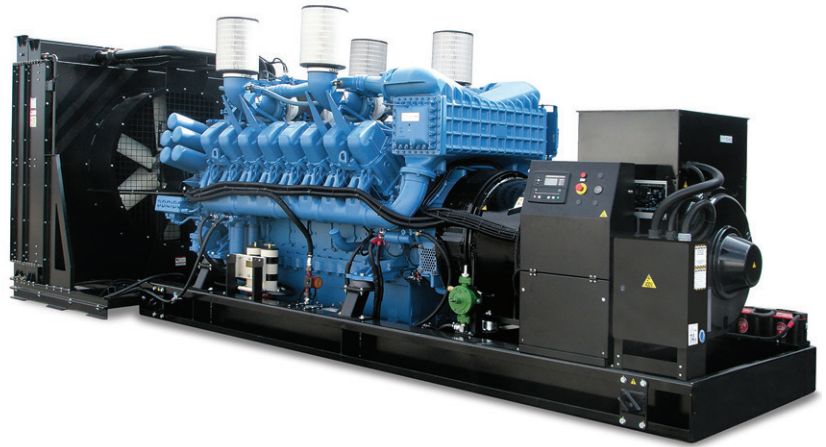


# 2290 KVA STANDBY OPEN SET MTU



## TECHNICAL INFORMATION

Voltage (V):	400/230
Frequency (Hz):	50
PRP Power (kVA)	2091.6
Standby Power (kVA)	2292
PRP Power (kW)	1673.3
Standby Power (kW)	1833.6

## Weight and Dimensions (mm)

Length (L)	6470
Width (W)	2256
Height (H)	2395
Weight (kg)	15918

## Consumption

	PRP Power	
	L/h	Range (hours)
25%	122.7	0
50%	216.8	0
75%	309.4	0
100%	406.1	0

	Standby Power	
	L/h	Range (hours)
25%	131.2	0
50%	234.6	0
75%	334.6	0
100%	441.5	0

## ENGINE

Brand	MTU
Model	16V 4000 G23
Electronic Management	YES
No. of cylinders	16
Engine Capacity (c.c)	76300
Bore (mm)	170
Stroke (mm)	210
Compression ratio	16.4:1
Water cooled	YES
Speed (R.P.M)	1500
Mechanical Net Power (kWm)	1910

## Cooling System

Flow of air from fan (m3/min)	1710
-------------------------------	------

## Lubrication System

Oil sump capacity (l)	240
Maximum oil consumption (% fuel consumption)	1

## Air intake system

Aspirated air flow (m3/min)	138
-----------------------------	-----

## Electrical System

Number of batteries	4
Battery	12V 44Ah-730A

## Exhaust System

T <sup>a</sup> gas emission (°C)	485
Gas flow (m3/min)	348

## ALTERNATOR

Model	LSA 51.2 L70
AVR	R 449
Power (kVA)	2420

## ELECTRIC PANEL

Protection Devices	YES
Control Card	DEEP SEA 7320