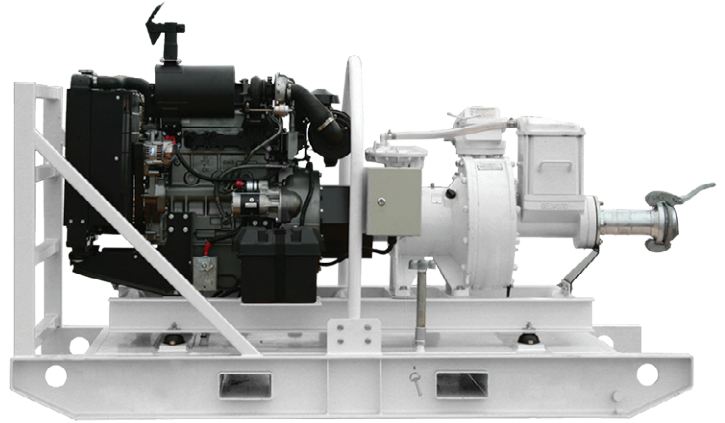


MEGAPUMP 33H

3" - 80MM



SPECIFICATIONS

Power Req (KW)	30
Pump Sp (R.P.M)	1400–2000
Max Flow Litres/Sec	26
Suction Lift (m)	9.1
Solids Size (mm)	19
Air Handling Capacity (cfm)	50
Inlet/Outlet (mm)	80
Max Delivery Head (m)	95

DIMENSIONS

Silenced Unit (Incl Fittings)

Length (cm)	231
Width (cm)	141
Height (cm)	173
Dry Weight (kg)	1545
Fuel Tank Capacity (L)	219
dB(A) Rating @ 7mtrs	62

Open Unit (Excl Fittings)

Length (cm)	305
Width (cm)	134
Height (cm)	150
Dry Weight (kg)	1300
Fuel Tank Capacity (L)	105

PUMP MATERIALS

Pump Casing	Grade 14 Iron BS EN 1561:1997
Impeller	SGIron Grade 27/12 (D 180mm) BS EN 1563:1997
Wear Plate	Cast Iron BS2789 Grade 500/7
Shaft	EN10277-2-C40+C
NRV Body	Grade 14 Iron BS EN 1561:1997
Mechanical Seal	Sealide / Ceramic
Pump End Bearing	Deep Groove Ball
Drive End Bearing	Roller
Priming Method	Diaphragm

PRIME MOVERS

Engine	Iveco F32
Fuel Consumption BEP	6.5
Electric motors also available	

