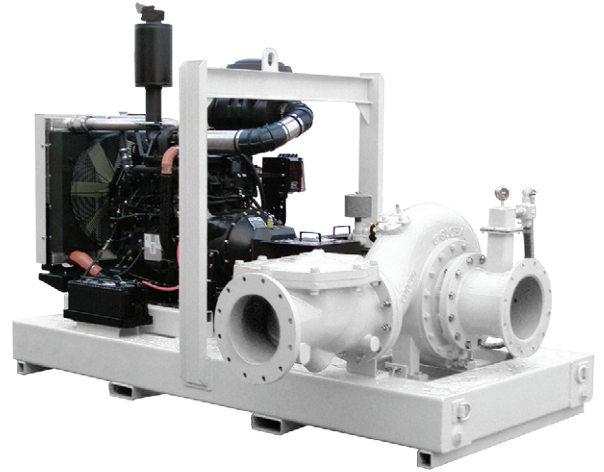


MEGAPUMP 1212HF



SPECIFICATIONS

Power Req (KW)	129
Pump Sp (R.P.M)	800–1200
Max Flow Litres/Sec	535
Suction Lift (m)	8.5
Solids Size (mm)	100
Inlet/Outlet (mm)	300/300
Max Delivery Head (m)	36

DIMENSIONS

Open Unit (Excl Fittings)	
Length (cm)	378
Width (cm)	200
Height (cm)	195
Dry Weight (kg)	2855
Fuel Tank Capacity (L)	568

PUMP MATERIALS

Pump Casing	Cast Iron
Impeller (D 180mm)	Cast Iron
Wear Plate	Cast Iron
Shaft	Stainless Steel / Steel
NRV Body	Nitrile Fitted Cast Iron
Mechanical Seal	Silicon Carbide on Tungsten Carbide
Priming Method	Compressor fed Venturi Priming

PRIME MOVERS

Engine	CAT C6.6
Fuel Consumption BEP	26.5/hr
Electric motors also available	

